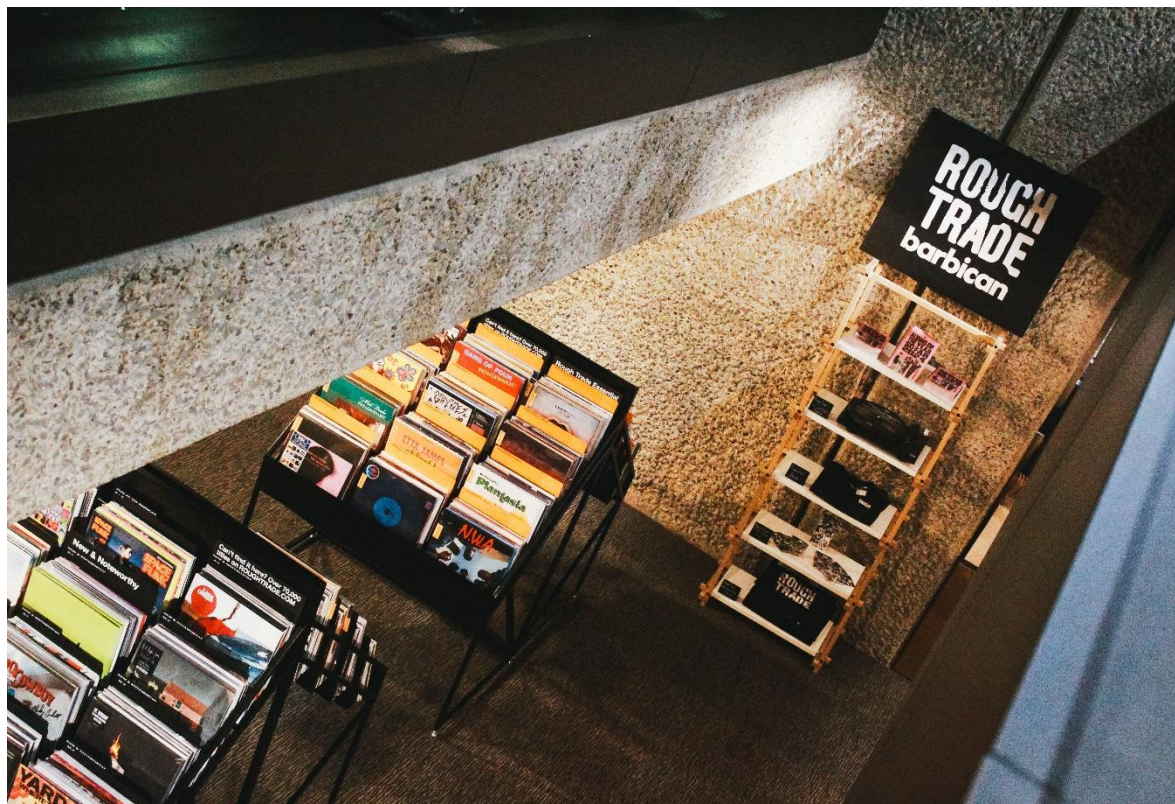


For immediate release: Wednesday 17 July

# barbican

# ROUGH TRADE

## Rough Trade pop-up store arrives at the Barbican Shop



London's Barbican Shop will host a pop-up store for legendary independent music retailer Rough Trade from July 2024 until the end of the year. Visitors to the Barbican will now be able to delve into an extensive selection of vinyl records in a specially curated area of the Barbican Shop. The selection includes Rough Trade's picks of new and emerging music from the independent scene, some of the most influential names in music to come out of the capital, and records by some of the many artists to have performed headline shows at the Barbican, both past and present.

The collaboration between the Barbican and Rough Trade brings together a shared ethos of championing live music and alternative artists and is the latest in a series of collaborations with the record store over the years. The record store celebrated their 40<sup>th</sup> anniversary with a special Barbican show in 2016 with performances from the likes of The Pop Group, Green Gartside (Scritti Politti), John Grant, Protomartyr and more.

With Rough Trade's formation in the 1970s London punk scene taking place while the Barbican was being constructed, the pop-up store at the Barbican reinforces the shared roots between two organisations dedicated to celebrating London's thriving music scene.

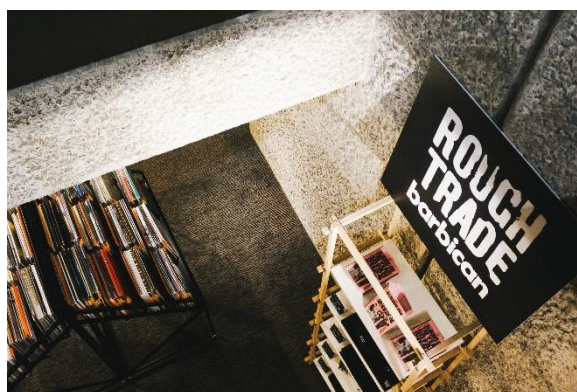
### **Jo Davis, Head of Retail at the Barbican, says:**

*"We are thrilled to be collaborating with Rough Trade, a true icon in the music world. Our audiences will be able to shop a collection curated by Rough Trade, representing some of*

*London's finest artists as well as featuring records from musicians who have graced our stage. From groundbreaking contemporary artists to legendary performers, the selection highlights the diverse and rich musical heritage that is a hallmark of the Barbican's music programme."*

**Lawrence Montgomery, Managing Director of Rough Trade UK, says:**

*"We're excited to announce our new partnership with the Barbican, one of London's cultural landmarks. This collaboration brings a special Rough Trade pop-up shop to the Barbican, along with a unique merch collection that reflects our mutual love for music, art, and creativity. For the next six months, visitors can expect a record shop experience that complements the Barbican's incredible contributions to music and culture. This partnership unites two of London's music icons, and we're thrilled to work together to bring something fresh and inspiring to our community."*



For press image downloads, [click here](#).

To find out more about the Barbican music programme, upcoming performances and latest press releases, [click here](#).

**ENDS**

**Notes to Editors**

**Press Information**

For further information, images or to arrange interviews, please contact:

**John Kelly**, Communications Team Coordinator / [john.kelly@barbican.org.uk](mailto:john.kelly@barbican.org.uk)

**Ed Maitland Smith**, Communications Manager for Music / 0203 834 1115 / [edward.maitlandsmith@barbican.org.uk](mailto:edward.maitlandsmith@barbican.org.uk)

**Barbican Shop**

Level G & M, Barbican Centre

Opening hours: Mon 11am–7pm, Tue–Fri 11am–8pm, Sat 10am–8pm, Sun 10am–7pm

Prices are correct at time of going to press

[shop.barbican.org.uk](http://shop.barbican.org.uk)

**Rough Trade**

Rough Trade first opened in 1976 in West London, on the doorstep of punk. Almost fifty years later, we're still celebrating the most exciting new music with stores in London, Bristol, Nottingham, Liverpool, Berlin and New York.

Rough Trade has always strived to narrow the gap between fan and artist, nurturing our close relationships within the music community to create a trusted and distinct destination for



music discovery. Hosting intimate live shows, including legendary live performances with Beastie Boys (1994), Blur (2009), Björk (2015) and Jack White (2022), is an integral part of our shops' culture.

Although we have expanded and evolved over the years, our DIY-ethos has allowed each of our store spaces to retain their unique identity. Our passionate staff and love for diverse listening have been instrumental in collectively maintaining that local feel that makes visiting a record store so unparalleled.

You can find Rough Trade in London in Ladbroke Grove (Rough Trade West), Shoreditch (Rough Trade East) and Soho (Rough Trade Soho).

@roughtrade

### **About the Barbican**

The Barbican is a catalyst for creativity, sparking possibilities for artists, audiences, and communities. We showcase the most exciting art from around the world, pushing traditional artistic boundaries to entertain and inspire millions of people, create connections, provoke debate, and reflect the world we live in.

We are an international arts and events centre rooted firmly in our own neighbourhood, collaborating with local communities and putting the City of London on the map as a destination for everybody. Central to our purpose is supporting emerging talent and shaping opportunities that will accelerate the next generation of creatives.

As a not-for-profit, we rely on the generosity of individuals and organisations, including our principal funder the City of London Corporation. Every ticket purchased, donation made, and pound earned supports our arts and learning programme and enables the widest possible range of people to experience the joy of the arts.

Opened in 1982, the Barbican is a unique and audacious building, recognised globally as an architectural icon. As well as our theatres, galleries, concert halls and cinemas, we have a large conservatory with over 1,500 species of plants and trees, a library, conference facilities, public and community spaces, restaurants, bars, and a picturesque lakeside oasis.

We're proud to be the home of the [London Symphony Orchestra](#), and a London base of the [Royal Shakespeare Company](#). We regularly co-commission, produce and showcase the work of our other associates and partners including the [Academy of Ancient Music](#), [the BBC Symphony Orchestra](#), [Boy Blue](#), [Britten Sinfonia](#), [Cheek by Jowl](#), [Darbar Festival](#), [Doc'n Roll Film Festival](#), [Drum Works](#), [EFG London Jazz Festival](#), [London Palestine Film Festival](#), [Serious](#), and [Trafalgar Theatre Productions](#).

For more information, visit our [website](#) or connect with us on [Instagram](#) | [Twitter](#) | [Facebook](#) | [YouTube](#) | [Spotify](#) | [LinkedIn](#)