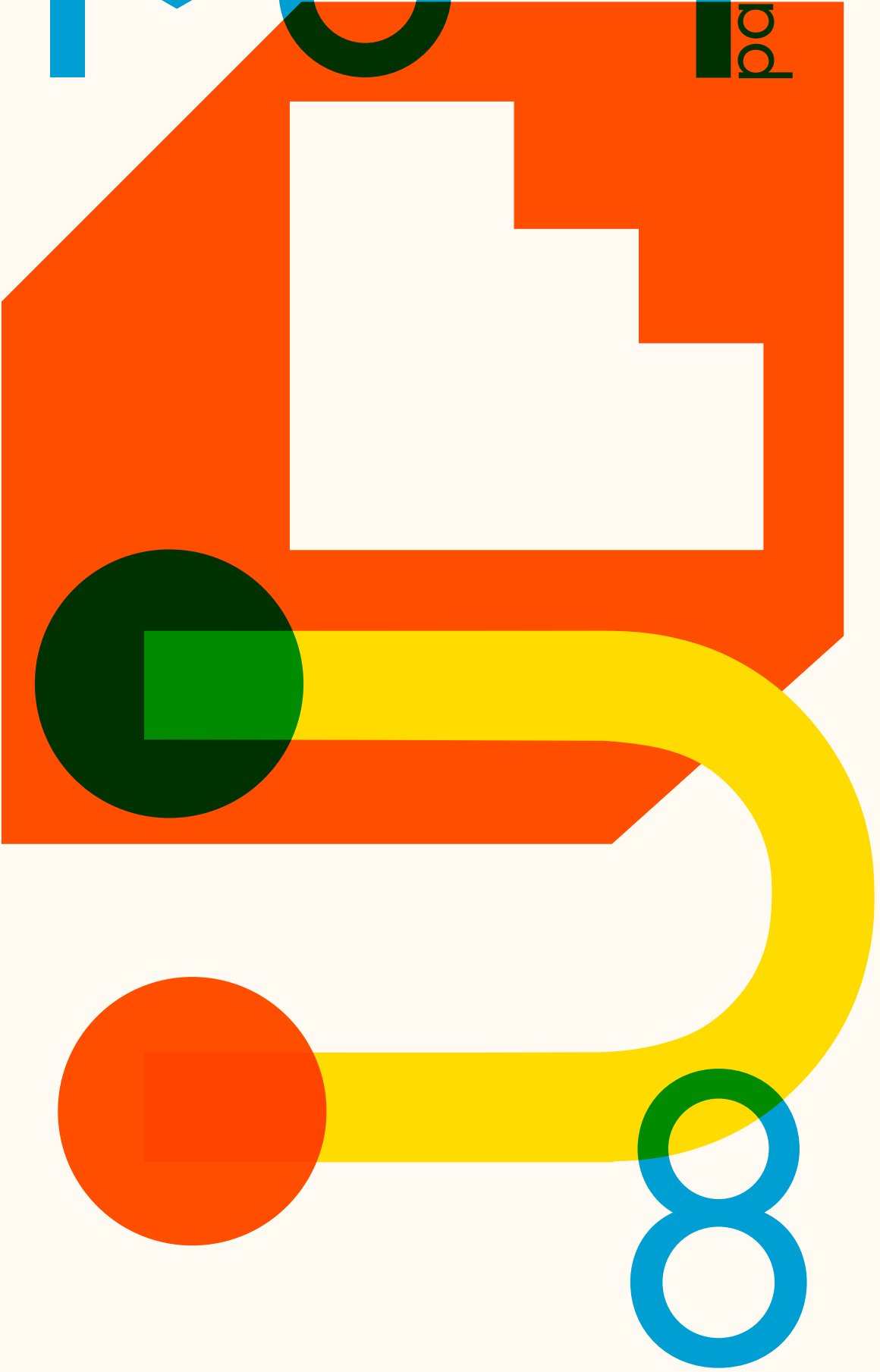


berlin

pack

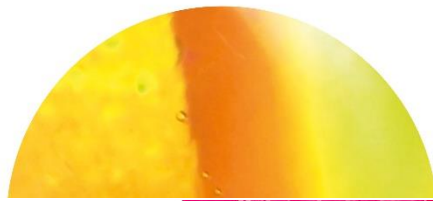


**barbican**

## **Squish Space** Chair Crowd

Find a chair in your house, dress it with clothes that fit. Use socks, jackets, jumpers... Can you balance a hat on top?

Now put together 2 or 3 chairs and create characters for each chair! Do they have names? What are they saying to each other?



**GUILD  
HALL**  
SCHOOL

**barbican**

## **Squish Space** Kitchen Archaeologist

Fill a bucket or bowl with rice or pasta - can you hide and find things in there?



**GUILD  
HALL**  
SCHOOL

**barbican**

# Squish Space

## Body Orchestra

Find some tape, string or elastic bands, now find things in your house that make different sounds. Attach these things to your body in different ways to make new sounds as you walk or move around.

**GUILD  
HALL  
SCHOOL**

**barbican**

# Squish Space

## Floorraits

Take turns to lie down on the floor and use tape or string to draw the outline of your body. What funny shapes can you make? Stand up and have a look! Can you add features like eyes or a nose?

**GUILD  
HALL  
SCHOOL**



**barbican**

## **Squish Space**

### Listen Up

Using the voice record function on your phone, record strange sounds around the house or out and about and listen to them through headphones. What can you find? How does the recording change when you hold the phone close or move it around to the sound source?



**GUILD  
HALL  
SCHOOL**

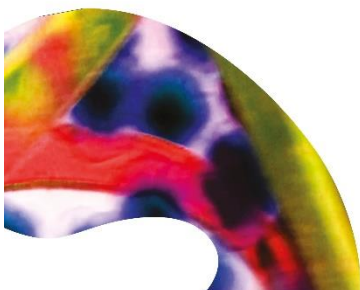
**barbican**



## **Squish Space**

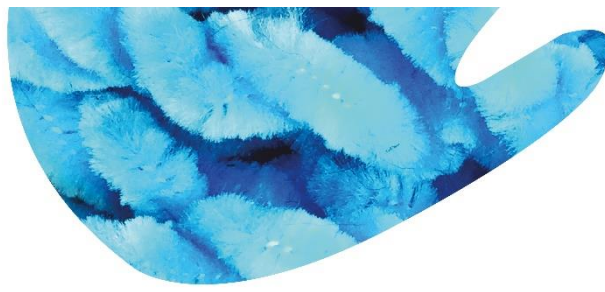
### Potion Time

Save a water bottle or clear container and take it with you to the park. Pick 5 different kinds of leaves, herbs or twigs and put them in the bottle. When you get home fill the bottle with water, put the lid on and have a look at your potion by shining your phone torch through the water. What can you see?



**GUILD  
HALL  
SCHOOL**

**barbican**



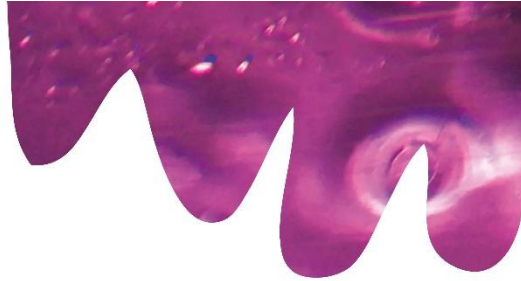
## **Squish Space** Den Time

Make a sensory space - use table lamps or torches and tablecloths or bedsheets to make a special den under a table or using two or three chairs as a structure.



**GUILD  
HALL**  
SCHOOL

**barbican**



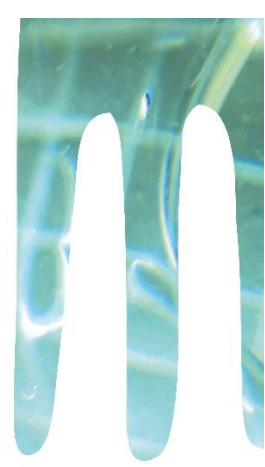
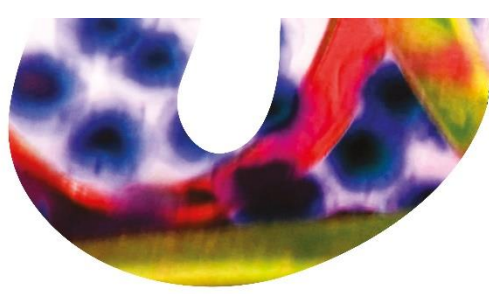
## **Squish Space** Pillow Party!

Put all the pillows/soft things in the house on one bed and have a big pillow fight party/ gymnastics competition (put some loud music on too!)



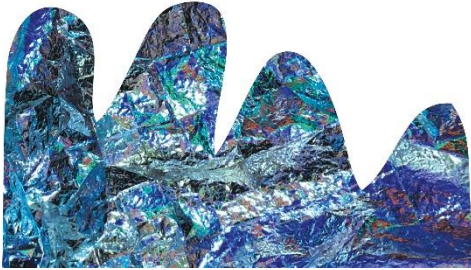
**GUILD  
HALL**  
SCHOOL

**barbican**



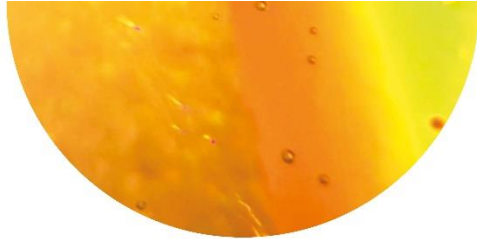
## **Squish Space** Lazer Escape

Bring string or some coloured wool to the park & wrap it between trees to make a lazer maze - try to get through without touching the threads!



**GUILD  
HALL**  
SCHOOL

**barbican**



## **Squish Space** Bubbles Forever

In a large water bottle or container mix 6 cups water, 1 cup washing up liquid and  $\frac{1}{2}$  a cup of corn starch. Shake it up! Now take your mix and a bowl to the park, decant the mixture and use your hands in 'O' shapes to make giant bubbles!



**GUILD  
HALL**  
SCHOOL

**barbican**

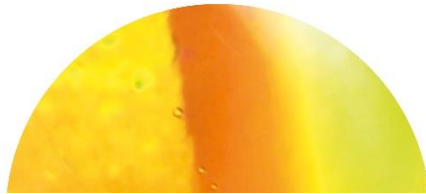


## **Squish Space** Balance Tower

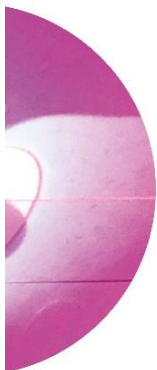
Find some non-breakable items in your house, pile them as high as they can go until the tower topples over. Now do it again! How high can it go?



**GUILD  
HALL  
SCHOOL**



**barbican**



## **Squish Space** The One Where You Wear All The Clothes

Go to wherever you keep your clothes. Now try to put on as many clothes as possible at once, see if you can swap clothes to get more layers on - who can put on the most? Is it a race? Who laughs the most?



**GUILD  
HALL  
SCHOOL**

**barbican**

## Squish Space Smelly Time

Find different things in the kitchen and/or bathroom that have scent – spices, soap, foods... - how many different smells can you find?

Arrange them all in bowls on a table. Now use a scarf, face mask or a hat to make a blindfold and play a guessing game to find out what each smell is! You can also try this with different edible things and work out what you taste!

**GUILD  
HALL  
SCHOOL**

**barbican**

## Squish Space At Home Olympics

Find objects, furniture around the house and arrange them to make an obstacle course in a hallway or living room. What challenges are there? What unusual ways can you get around?

**GUILD  
HALL  
SCHOOL**




# AHOY

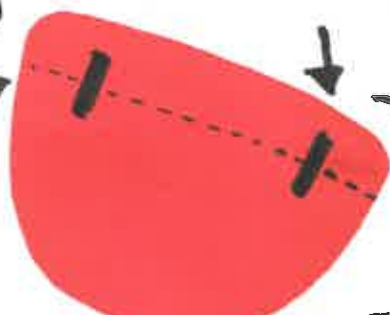
THIS PACK CONTAINS PROMPTS AND CRAFT IDEAS FOR AN EPIC PIRATE ADVENTURE! ALL YOU NEED IS IMAGINATION!


TO HELP YOU GET INTO CHARACTER CONSIDER...

- + WHAT IS YOUR PIRATE NAME?
- + WHAT IS THE NAME OF YOUR SHIP?
- + WHERE IS THE TREASURE ISLAND?
- + DO YOU HAVE A COMPANION? MAYBE A PET MONKEY OR PARROT
- + WHICH SEA IS YOUR SHIP SAILING ACROSS?

## PIRATE EYE PATCH

①  DRAW AN EYEPATCH SHAPE ONTO A SCRAP OF CARD AND CUT OUT

②  CUT 2 SMALL SLITS. DO THIS BY FOLDING ALONG THE DOTTED LINE.

③  THREAD STRING THROUGH SLITS. DECORATE AND WEAR!

NOW LETS GET YOU LOOKING LIKE A PIRATE!

## ANTIQUE PAPER



MAKE A CUP OF COFFEE AND LET SIT FOR 5 MINUTES.



POUR COFFEE INTO A TRAY. ADD PAPER AND LET IT SOAK UP LIQUID.



HANG PAPER TO DRY OR BAKE IN AN OVEN FOR APPROX 5 MINS - (UNTIL THE EDGES CURL)

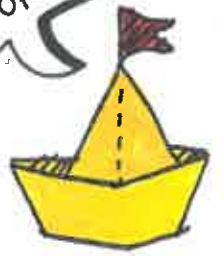
TIP: REPEAT FOR A DARKER COLOUR.

USE THIS TECHNIQUE TO MAKE AN AUTHENTIC LOOKING TREASURE MAP

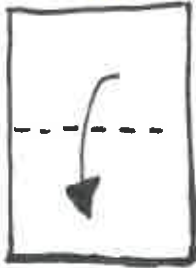
WITH ADULT SUPERVISION!

# Paper Boats

ALL YOU NEED IS AN A4 PIECE OF PAPER!



①



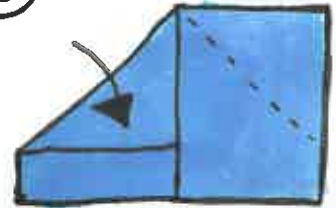
FOLD A4 PAPER IN HALF AND KEEP FOLDED.

②



FOLD IN HALF AGAIN AND OPEN UP TO LEAVE A CREASE.

③



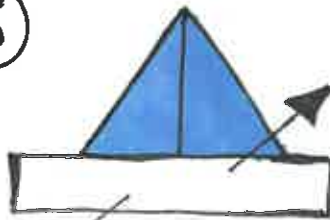
FOLD EACH CORNER DOWN USING MIDDLE CREASE AS A GUIDE.

④



FOLD UP EDGES ON BOTH SIDES.

⑤



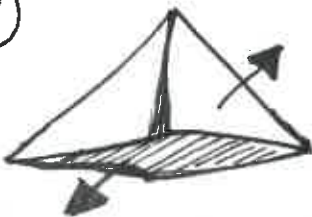
PUT THUMBS IN MIDDLE, OPEN OUT AND FLATTEN.

⑥



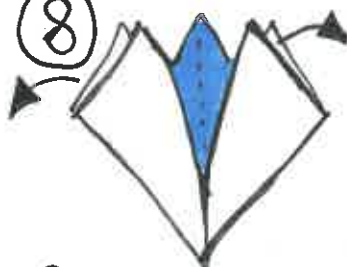
TUCK CORNERS OF FLAPS UNDER AND FOLD BOTH SIDES UP ALONG DOTTED LINE.

⑦



PUT THUMBS IN THE BOTTOM AND OPEN OUT.

⑧



PULL OUT CORNERS UNTIL...

⑨



...YOU HAVE A BOAT! FLATTEN THE BOTTOM AND AWAY YOU GO!

**ANCHOR** WHY NOT?... DECORATE!

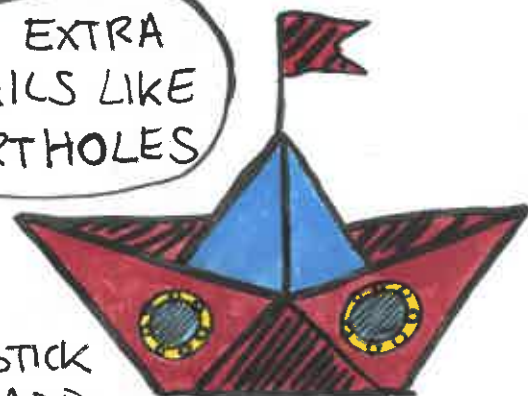
**WHEEL** CUT A SCRAP OF PAPER INTO A FLAG SHAPE AND ADD A DESIGN.

eg.



ATTACH THE FLAG TO A COCKTAIL STICK OR STRAW. ADD TO BOAT.

ADD EXTRA DETAILS LIKE PORTHOLES

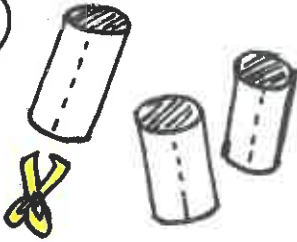


# TELESCOPE



YOU WILL NEED-  
3 TOILET TUBES  
TAPE  
SCISSORS  
\* EXTRAS TO  
DECORATE (PENS,  
PAINT/PAPER)

①



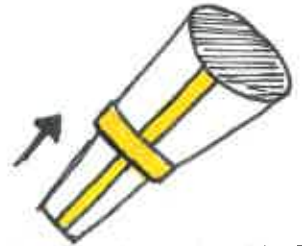
CUT A STRAIGHT LINE THROUGH EACH TOILET TUBE.

②



ROLL UP A TUBE SO THAT IT IS WIDER AT THE TOP AND TAPE.

③



ROLL ANOTHER TUBE AND INSERT INTO THE FIRST. MAKE SURE THE TUBE IS NARROWER AT THE BOTTOM AND TAPE.

④



REPEAT STEP 3 WITH THE FINAL TUBE. MAKING SURE THE BOTTOM IS NARROWER.

⑤



ADD DECORATION USING MATERIALS YOU HAVE. PAINT, CRAYONS, STICKERS AND COLOURED PAPER WOULD ALL WORK WELL.

⑥



TIME TO TAKE TO THE SEAS AND EXPLORE!

WHY NOT?  
ADD A JOLLY ROGER  
TO YOUR TELESCOPE

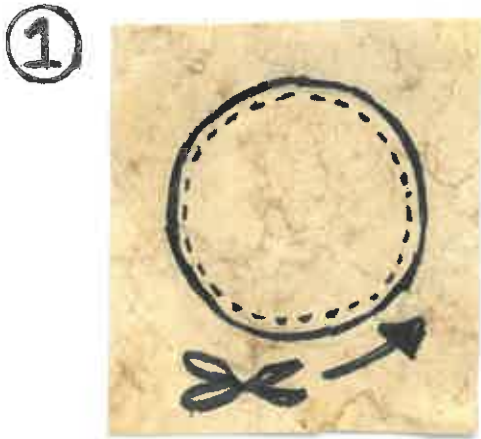


THE JOLLY ROGER IS THE FLAG DESIGN FLOWN TO IDENTIFY A PIRATE SHIP ABOUT TO ATTACK.

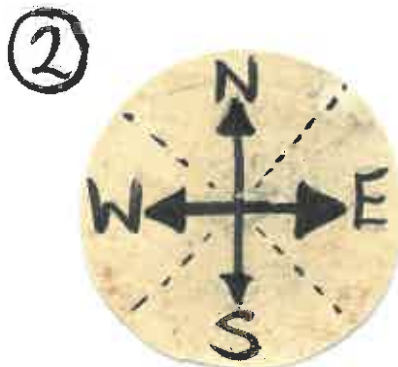


# JAM JAR LID COMPASS

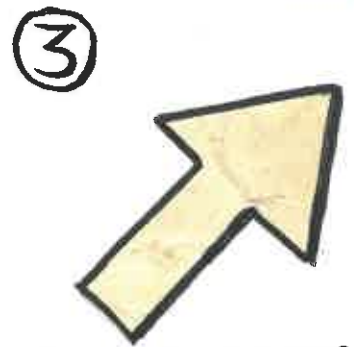
YOU WILL NEED:  
 CARD  
 JAR LID  
 GLUE STICK  
 PEN/PENCIL  
 SPLIT PIN\*



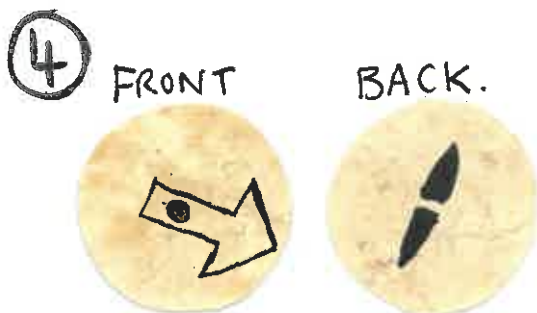
① DRAW AROUND JAR LID ONTO CARD. CUT OUT DISC, BUT SLIGHTLY SMALLER.



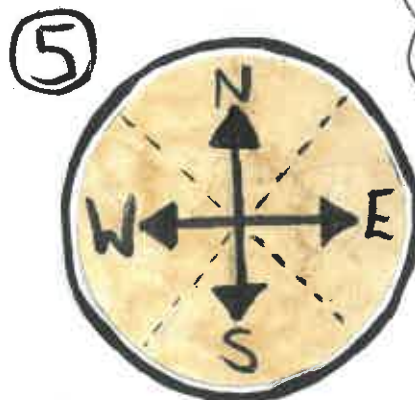
② DRAW YOUR COMPASS DESIGN ONTO THE DISC. OR USE THE COMPASS TEMPLATE BELOW.



③ ON ANOTHER PIECE OF CARD DRAW AN ARROW SHAPE AND CUT OUT.



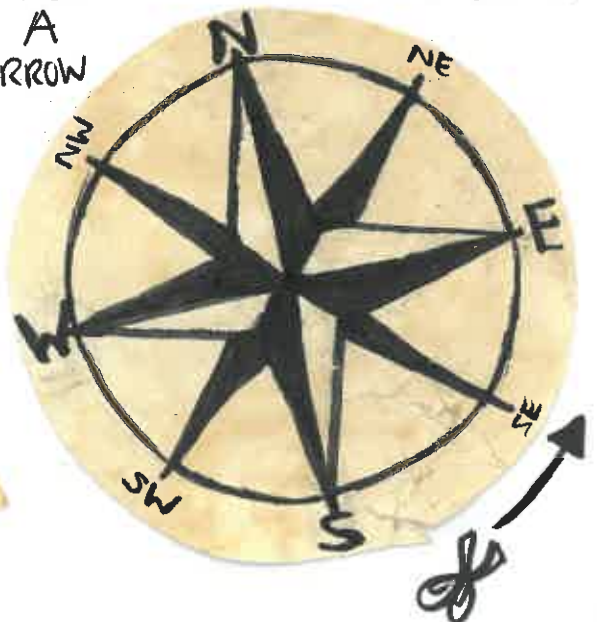
④ MAKE A HOLE IN THE CENTRE OF THE DISC AND IN THE END OF THE ARROW. THREAD THROUGH SPLIT PIN.\*




⑤ STICK DISC INTO JAR LID.\*IF YOU DON'T HAVE A PIN STICK ARROW ON TOP.

AN EASY WAY TO REMEMBER THE ORDER OF A COMPASS:  
 NEVER  
 NEAT  
 SHREDDED  
 WHEAT

TEMPLATE 



TOP TIP!  
 TO MAKE A HOLE USE A SHARP PENCIL AND PLACE SOMETHING SOFT UNDER eg. blutac/rubber 



# TREASURE MAP

COMPLETE THE TREASURE  
MAP USING YOUR OWN  
LANDMARKS. REMEMBER  
X MARKS THE SPOT WHERE  
TREASURE IS BURIED.





# Making patterns from natural materials

**Under 5s**

**You will need:** range of natural materials, card & some sticky tape

In the garden (or from a collection of natural materials you have) set a challenge to collect as many small natural items that are different colours (Tip: they have to be as small as a 20p piece).

- Count how many different colours they can find
- Count how many different green or brown natural materials they can find
- Stick the natural materials onto a piece of card in a repeating pattern (Tip: start the pattern off for your child to complete) eg.



This activity can be extended using a range of different natural materials which are used to create repeating patterns. (Tip: make a pattern & see if your child can match it.)



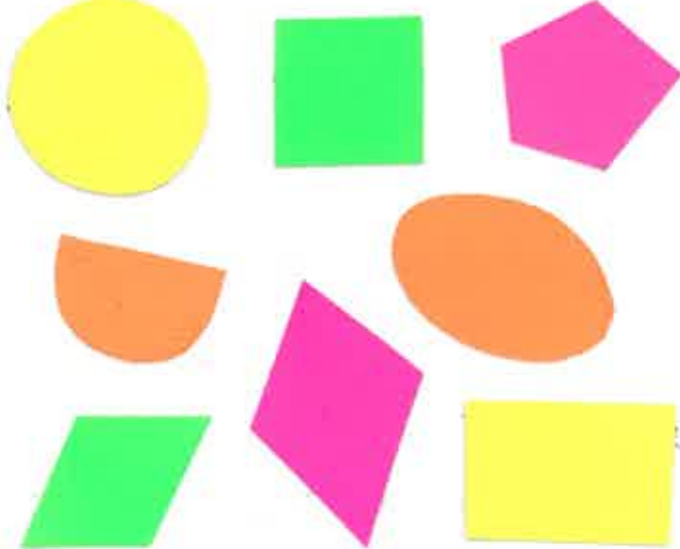
# SHAPEABLES!

WEARABLE MAKES EXPLORING SHAPE + FORM

## SHAPE PLAY

BEFORE WE MAKE OUR WEARABLE ART  
HERE ARE 4 ACTIVITIES TO GET YOU  
PLAYING AROUND WITH SHAPES AND FORM.

① DRAW DIFFERENT SIZED SHAPES  
ONTO CARDBOARD OR PAPER  
AND CUT OUT. TOP TIP - USE  
MAGAZINES AND SCRAP PAPER.



② WHAT IMAGES CAN YOU MAKE  
USING THE SHAPES? ADD  
DETAILS TO HELP BRING TO LIFE.



③ TAKE INSPIRATION FROM  
NATURE TO CREATE NEW  
ORGANIC SHAPES.\* DRAW + CUT OUT



\* OFTEN CURVED AND FLOWING  
ORGANIC SHAPES ARE  
IRREGULAR AND IMPERFECT

④ CUT LITTLE SLITS INTO  
YOUR CARDBOARD SHAPES

eg.



BY SLOTTING THE SHAPES  
TOGETHER WHAT 3D FORMS  
(SCULPTURES) CAN YOU MAKE?

eg.



CAN YOU GET YOUR SCULPTURE  
TO STAND UP ON ITS OWN?

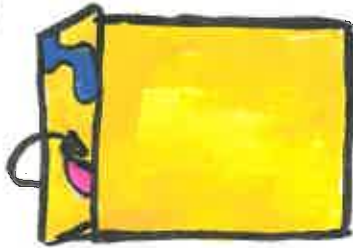
# FUN WITH FANS

①



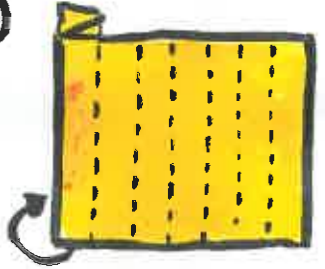
ON AN A4 PIECE OF PAPER CREATE YOUR SHAPE DESIGN.

②



START AT ONE END OF PAPER AND FOLD A 2CM CREASE.

③



FOLLOW THAT BY ANOTHER 2CM CREASE THE OTHER WAY.

④



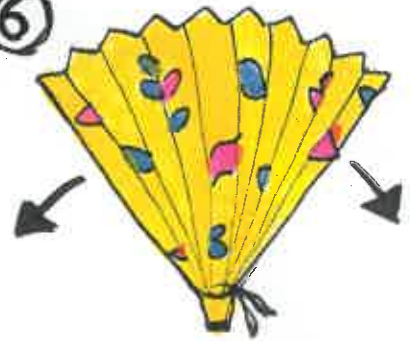
REPEAT STEP 3 UNTIL THE ENTIRE PAPER IS FOLDED

⑤



PINCH THE END AND USE TAPE, STRING OR A STAPLE TO SECURE.

⑥



FAN OUT YOUR FAN... AND TA DA!

## MAKE YOUR FAN WEARABLE!



MAKE 3 (OR MORE) FANS. STICK EACH EDGE TOGETHER WITH TAPE OR A GLUE STICK.



TIE A KNOT AT EACH END

MAKE A HOLE THROUGH EACH FOLD USING A HOLE PUNCH OR A SHARP PENCIL, AND THREAD STRING THROUGH.



WEAR YOUR NEW NECKLACE WITH STYLE! YOU COULD ALSO MAKE SMALL ONES AS BRACELETS

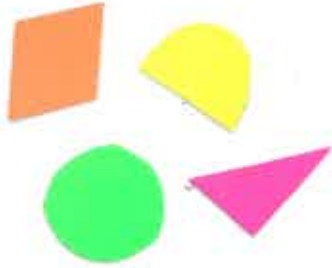
WHY NOT? CREATE DANCE MOVES TO SHOW OFF YOUR WEARABLES AND PROPS. WHAT SHAPES CAN YOU MAKE WITH YOUR BODY?



# WEARABLE ART!

## SHAPE NECKLACE

①



DRAW AND CUT OUT CARDBOARD SHAPES.

②



CREATE A DESIGN USING THE SHAPES AND STICK TOGETHER.

③



ADD HOLES TO THE DESIGN AND THREAD THROUGH STRING AND WEAR!

OR...

①



DRAW AND CUT OUT SHAPES USING CORRUGATED CARD.

②



THREAD A NEEDLE THROUGH EACH SHAPE OR USE A SKEWER TO CREATE A 'TUNNEL'.

③



TRY ADDING PATTERN TO YOUR SHAPES!

THREAD STRING THROUGH THE 'TUNNEL'. TIE A KNOT AT EACH END AND WEAR!

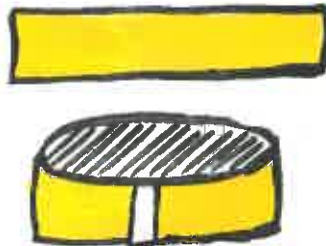
## SHAPE HEADDRESS

①



DRAW AND CUT OUT A MIXTURE OF CARD SHAPES. ADD SLITS TO SOME SHAPES.

②



CUT A LONG STRIP OF THIN CARD. WRAP STRIP AROUND THE WEARER'S HEAD AND TAPE SECURE AT A SNUG FIT.

③



PLAY AROUND WITH THE SHAPES AND ATTACH TOGETHER WITH TAPE/GLUE OR A STAPLER.

# BOTANICAL COLOURING IN

The natural world is full of beautiful shapes, colours, smells and textures. We had fun creating these black and white line drawings from plants and flowers that we can see around us at this time of the year. Can you make your own?

There are so many ways to paint a picture. You could copy the illustrators of the past who chose accuracy and studied the form and colour in a time when photography wasn't yet that common. Or what about releasing your inner kaleidoscope and experimenting with bright and vibrant colours?



Dog rose  
(*Rosa canina*)



# COMPANY DRINKS

[vimeo.com/companydrinks](https://vimeo.com/companydrinks)  
[www.companydrinks.info](http://www.companydrinks.info)

**Sweet woodruff**  
(Galium odoratum)



**COMPANY DRINKS**

[vimeo.com/companydrinks](https://vimeo.com/companydrinks)  
[www.companydrinks.info](http://www.companydrinks.info)



**Chamomile**  
(*Matricaria chamomilla*)



**COMPANY DRINKS**

[vimeo.com/companydrinks](https://vimeo.com/companydrinks)  
[www.companydrinks.info](http://www.companydrinks.info)