

barbican

Pre-installation press image form

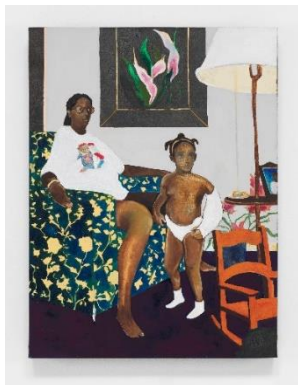
Barbican Art Gallery exhibitions early 2025

Barbican Art Gallery and The Curve, London, UK

February – April 2025

@barbicancentre

PLEASE DOWNLOAD HIGH-RES FILES VIA [THIS LINK](#).

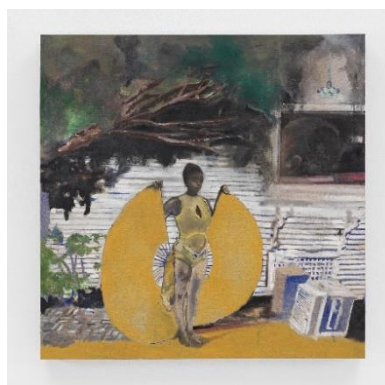


1. **Noah Davis**

Noah Davis, *Single Mother with Father Out of the Picture*, 2007-2008

© The Estate of Noah Davis

Courtesy The Estate of Noah Davis and David Zwirner



2. **Noah Davis**

Noah Davis, *Isis*, 2009

Mellon Foundation Art Collection

© The Estate of Noah Davis

Courtesy The Estate of Noah Davis and David Zwirner



3. **Noah Davis**

Noah Davis, *The Missing Link 4*, 2013

Los Angeles County Museum of Art
Purchased with funds provided by AHAN:

Studio Forum, 2013 Art Here and Now
purchase

© The Estate of Noah Davis

Courtesy The Estate of Noah Davis and David Zwirner



4. **Noah Davis**

Noah Davis, *Pueblo del Rio: Arabesque*, 2014

© The Estate of Noah Davis

Courtesy The Estate of Noah Davis and David Zwirner



5. **Noah Davis**
Noah Davis at work, Los Angeles, 2009
Photo: Patrick O'Brien-Smith



6. **Noah Davis**
Installation view, Noah Davis: *Imitation of Wealth*, The Underground Museum, 2013
© The Estate of Noah Davis



7. **Citra Sasmita: Into Eternal Land**
Citra Sasmita
© Yeo Workshop



8. **Citra Sasmita: Into Eternal Land**
Installation view of Citra Sasmita, *Ode to the Sun*, Yeo Workshop, Singapore, 2020



9. **Citra Sasmita: Into Eternal Land**
Installation view of Citra Sasmita, *Timur Merah Project XII: Rivers With No End*, as part of *After Rain*, Diriyah Contemporary Art Biennale, 2024
Courtesy of the Diriyah Biennale Foundation
Photo: Marco Cappelletti



10. **Citra Sasmita: Into Eternal Land**
Installation view of Citra Sasmita, *Timur Merah Project IX: Beyond the Realm of Senses (Allegory of the Archipelago)*, as part of *Choreographies of the Impossible*, 35th São Paulo Biennale, Brazil, 2023
© Levi Fanan / Fundação Bienal de São Paulo

IMPORTANT CREDIT AND PICTURE INFORMATION

These images may only be used for publicity purposes in connection with **Noah Davis, 6 February – 11 May 2025, Barbican Art Gallery** and **Citra Sasmita: *Into Eternal Land*, 30 January – 20 April 2025, The Curve, Barbican**, which must be credited appropriately. The images may NOT be cropped, bled off the page, overprinted with text, or altered in any way and may not be passed to any third parties without further permission. All caption information, as given beneath each image, **MUST** appear whenever an image is reproduced.

If you have any queries, please contact:
visualartspress@barbican.org.uk

AFTER USING AN IMAGE/S FOR PUBLICATION

Please email a link or PDF of your article to us at visualartspress@barbican.org.uk

Or send a copy to:
Communications - Visual Arts
Barbican Centre
Silk Street, London, EC2Y 8DS

Thank you for your help with maintaining our records, we look forward to hearing from you.

Barbican Press room
All Barbican Centre press releases, news announcements and the Communications team's contact details are listed on our website at <https://www.barbican.org.uk/our-story/press-room>