

Barbican Concert Hall

LX spec

Lighting

The lighting equipment rigged in the Barbican Hall is divided into categories:

Orchestra Rig: This is a fixed rig, comprising of ETC D60 Lustr+ LED fixtures plus generic specials and cannot be re-focussed. The LEDs have 7 colour emitters – Red, Green, Blue, White, Amber, Cyan and Indigo.

Moving Lights: This is a standing rig, comprising of moving LED wash lights and discharge spot lights. They cannot be re-rigged or moved to different positions in the Hall.

Warp/M: The Warps are automated profiles, with remote control of pan, tilt, iris, zoom, focus and four shutters. These lanterns are to be used in open-white only and cannot be coloured-up nor re-rigged or moved to different positions in the Hall.

SolaFrame: The SolaFrames are automated profiles, with remote control of pan, tilt, iris, zoom, focus and four shutters. The lights use an LED source. These lanterns cannot be re-rigged or moved to different positions in the Hall.

Equipment List:

Control: The main lighting desk in the Concert Hall is a GrandMA2 Light with an MA2 fader wing. The system is backed up by an MA2 Replay Unit and expanded by an NPU.

Orchestra Rig:

64 x ETC D60 XTi Lustr+ Medium Lens
18 x ETC Source Four Profile 19-degree 575W
4 x ETC Source Four Profile 14-degree 575W
8 x ETC Source Four Profile 10-degree 575W

Moving Rig:

12 x Clay Paky A.leda B-EYE K20 - **Mode: Shapes DMX 35**
22 x Clay Paky A.leda B-EYE K10 - **Mode: Shapes DMX 35**
8 x Martin Mac Viper Profile - **Mode: 16 bit Ext DMX 34**
13 x Robe Pointe - **Mode: 3 DMX 30**
13 x Robe DL4S - **Mode: 1 DMX 47**
6 x Martin Mac 700 Profile - **Mode: Basic DMX 23**

Warp/M: 12 x ADB Warp/M 12-30deg 800W - **Mode: Motorised narrow iris DMX 25** - cannot be coloured

SolaFrame:

6 x High End Systems SolaFrame Theatre - **Mode: DMX 47**

Generic Rig:

28 x Robert Juliat 611SX Profile 11/26 degree 1.2kW (FOH)
12 x Robert Juliat 614SX Profile 16/35 degree 1.2kW (FOH)
12 x Arri 2000 (TV Rig - Audience Focus Only)

Extras: 8 x Clay Paky A.leda B-EYE K10 - **Mode: Shapes DMX 35**
4 x Robe Pointe - **Mode: 3 DMX 30**
12 x Thomas Par64 CP62 Short Nose Floor Cans

Hazer: 2 x Antari HZ - 500
8 x Clay 2 x Look Solutions Viper 2.6 fogger

We hold a small stock of LEE colours for the generic lights but please check with the Barbican Technical Manager first.

We keep the following Gobo holders for Robert Juliat profiles:

A-size metal gobo

B-size glass gobo.

All equipment details are subject to change.

Moving Light Rig

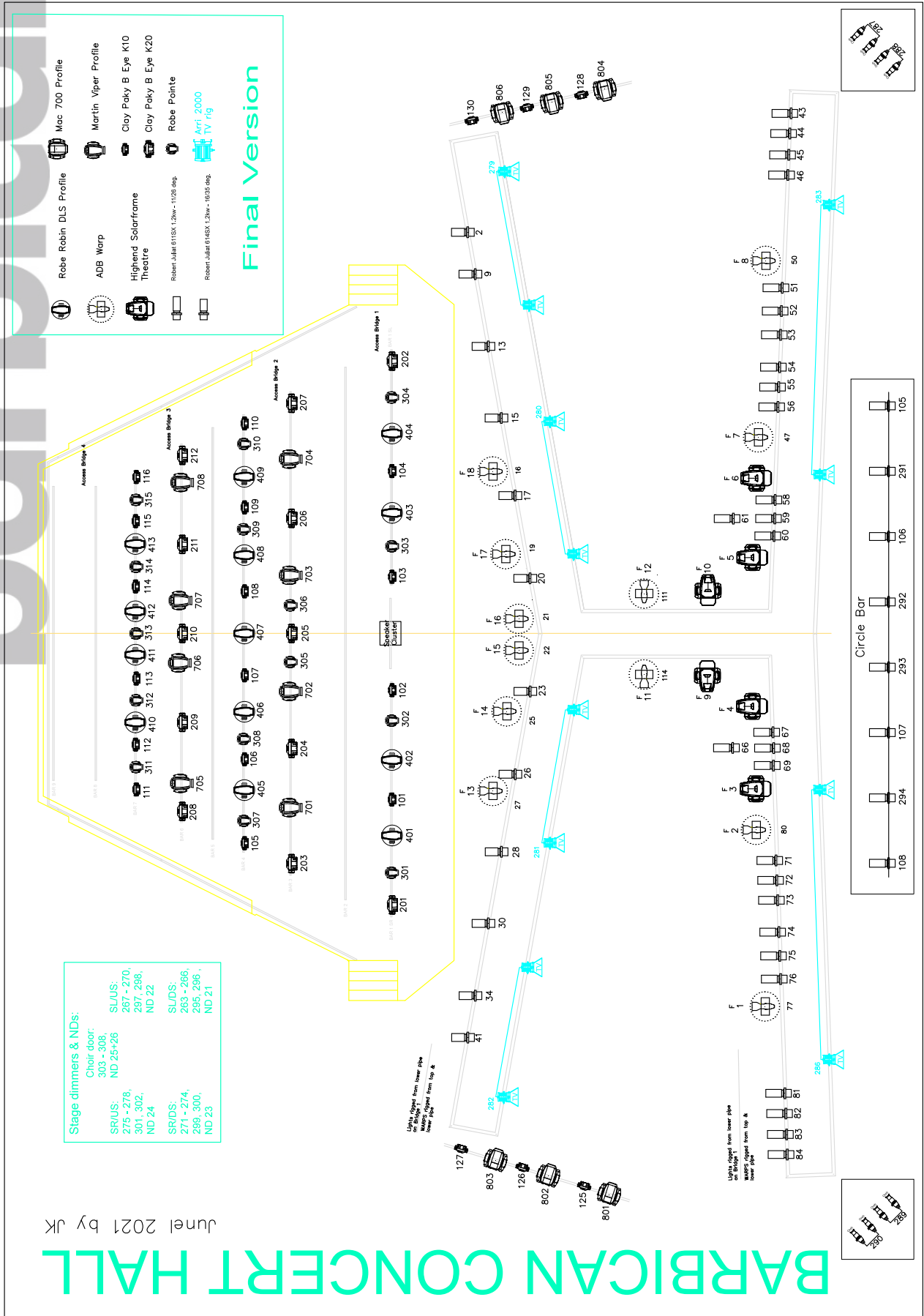
BARBICAN CONCERT HALL

June 2021 by JK

Stage dimmers & ND's:	
Choir door:	SR/US:
303 - 308,	275 - 278,
ND 25+26	287, 298,
	ND 22
	SU/DS:
	271 - 274,
	283 - 286,
	299, 300,
	295, 296 ,
	ND 23
	ND 21

Robe Robin DLS Profile	Mac 700 Profile
ADB Warp	Martin Viper Profile
Highend Solarframe Theatre	Clay Paky B Eye K10
Robert Juliat 6115X 1.23w - 1128 deg.	Clay Paky B Eye K20
Robert Juliat 6145X 1.23w - 1025 deg.	Robe Pointe
	Arri 2000 TV rig

Final Version



BARBICAN CONCERT HALL

June 2021 by JK

Stage dimmers & NDs:

Choir door:

303 - 308

SL/US:

267 - 270

297, 298,

ND 22

SR/US:

301, 302,

ND 24

SR/DS:

271 - 274,

299, 300,

295, 296,

ND 21

303 - 308

267 - 270

297, 298,

ND 22

301, 302,

ND 24

271 - 274,

299, 300,

295, 296,

ND 21

303 - 308

267 - 270

297, 298,

ND 22

301, 302,

ND 24

271 - 274,

299, 300,

295, 296,

ND 21

303 - 308

267 - 270

297, 298,

ND 22

301, 302,

ND 24

271 - 274,

299, 300,

295, 296,

ND 21

303 - 308

267 - 270

297, 298,

ND 22

301, 302,

ND 24

271 - 274,

299, 300,

295, 296,

ND 21

303 - 308

267 - 270

297, 298,

ND 22

301, 302,

ND 24

271 - 274,

299, 300,

295, 296,

ND 21

303 - 308

267 - 270

297, 298,

ND 22

301, 302,

ND 24

271 - 274,

299, 300,

295, 296,

ND 21

303 - 308

267 - 270

297, 298,

ND 22

301, 302,

ND 24

271 - 274,

299, 300,

295, 296,

ND 21

303 - 308

267 - 270

297, 298,

ND 22

301, 302,

ND 24

271 - 274,

299, 300,

295, 296,

ND 21

303 - 308

267 - 270

297, 298,

ND 22

301, 302,

ND 24

271 - 274,

299, 300,

295, 296,

ND 21

303 - 308

267 - 270

297, 298,

ND 22

301, 302,

ND 24

271 - 274,

299, 300,

295, 296,

ND 21

303 - 308

267 - 270

297, 298,

ND 22

301, 302,

ND 24

271 - 274,

299, 300,

295, 296,

ND 21

303 - 308

267 - 270

297, 298,

ND 22

301, 302,

ND 24

271 - 274,

299, 300,

295, 296,

ND 21

303 - 308

267 - 270

297, 298,

ND 22

301, 302,

ND 24

271 - 274,

299, 300,

295, 296,

ND 21

303 - 308

267 - 270

297, 298,

ND 22

301, 302,

ND 24

271 - 274,

299, 300,

295, 296,

ND 21

303 - 308

267 - 270

297, 298,

ND 22

301, 302,

ND 24

271 - 274,

299, 300,

295, 296,

ND 21

303 - 308

267 - 270

297, 298,

ND 22

301, 302,

ND 24

271 - 274,

299, 300,

295, 296,

ND 21

303 - 308

267 - 270

297, 298,

ND 22

301, 302,

ND 24

271 - 274,

299, 300,

295, 296,

ND 21

303 - 308

267 - 270

297, 298,

ND 22

301, 302,

ND 24

271 - 274,

299, 300,

295, 296,

ND 21

303 - 308

267 - 270

297, 298,

ND 22

301, 302,

ND 24

271 - 274,

299, 300,

295, 296,

ND 21

303 - 308

267 - 270

297, 298,

ND 22

301, 302,

ND 24

271 - 274,

299, 300,

295, 296,

ND 21

303 - 308

267 - 270

297, 298,

ND 22

301, 302,

ND 24

271 - 274,

299, 300,

295, 296,

ND 21

303 - 308

267 - 270

297, 298,

ND 22

301, 302,

ND 24

271 - 274,

299, 300,

295, 296,

ND 21

303 - 308

267 - 270

297, 298,

ND 22

301, 302,

ND 24

271 - 274,

299, 300,

295, 296,

ND 21

303 - 308

267 - 270

297, 298,

ND 22

301, 302,

ND 24

271 - 274,

299, 300,

295, 296,

ND 21

303 - 308

267 - 270

297, 298,

ND 22

301, 302,

ND 24

271 - 274,

299, 300,

295, 296,

ND 21

303 - 308

267 - 270

297, 298,

ND 22

301, 302,

ND 24

271 - 274,

299, 300,

295, 296,

ND 21

303 - 308

267 - 270

297, 298,

<p>Bar 6 - DMX K20 f-no</p> <p>1 36 71 106 141 208 209 210 211 212</p> <p>U9</p>	<p>Bar 7 - DMX K10 f-no</p> <p>1 36 71 106 141 176 111 112 113 114 115 116</p> <p>U11</p>	<p>FOH - DMX f-no</p> <p>151 3</p> <p>U21</p>
<p>Bar 3 - DMX K20 f-no</p> <p>1 36 71 106 141 203 204 205 206 207</p> <p>U5</p>	<p>Bar 4 - DMX K10 f-no</p> <p>1 36 71 106 141 176 105 106 107 108 109 110</p> <p>U7</p>	<p>198 4</p> <p>U21</p>
<p>Bar 1 - DMX K20 f-no</p> <p>1 36 201 202</p> <p>U3</p>	<p>Bar 1 - DMX K10 f-no</p> <p>71 106 101 102</p> <p>K10s</p> <p>141 176 103 104</p> <p>U3</p>	<p>151 5</p> <p>U22</p>
<p>Bar 7 - DMX Pointe f-no</p> <p>1 31 61 91 121 311 312 313 314 315</p> <p>U12</p>	<p>Walls - DMX K10 f-no</p> <p>1 36 71 106 117 118 119 120</p> <p>Not Available</p> <p>U13</p>	<p>198 6</p> <p>U22</p>
<p>Bar 4 - DMX Pointe f-no</p> <p>1 31 307 308</p> <p>U8</p>	<p>Walls - DMX K10 f-no</p> <p>141 176 211 246 121 122 123 124</p> <p>Not Available</p> <p>U13</p>	<p>245 9</p> <p>U21</p>
<p>Bar 3 - DMX Pointe f-no</p> <p>137 305</p> <p>U6</p>	<p>Aud Bars - DMX K10 f-no</p> <p>1 36 71 106 141 176 125 126 127 128 129 130</p> <p>U15</p>	<p>245 10</p> <p>U22</p>
<p>Bar 1 - DMX Pointe f-no</p> <p>1 31 301 302</p> <p>U4</p>	<p>Bar 7 - DMX DL4S f-no</p> <p>151 198 410 411</p> <p>245 292 412 413</p> <p>U12</p>	
<p>Bar 6 - DMX Viper f-no</p> <p>1 35 69 103 705 706 707 708</p> <p>U10</p>	<p>Bar 4 - DMX DL4S f-no</p> <p>121 168 215 262 309 405 406 407 408 409</p> <p>U8</p>	
<p>Bar 3 - DMX Viper f-no</p> <p>1 35 69 103 701 702 703 704</p> <p>U6</p>	<p>Bar 1 - DMX DL4S f-no</p> <p>121 168 401 402</p> <p>215 262 403 404</p> <p>U4</p>	
<p>Lamp DMX</p> <p>77 80 47 50 114 114 111 27 25 22 21 19 16</p> <p>U1</p>	<p>Floor - DMX K10 f-no</p> <p>1 36 71 106 141 176 211 246 901 902 903 904 905 906 907 908</p> <p>U16</p>	
<p>FOH - DMX</p> <p>1 26 151 176 251 276 301 326 351 376 401 426</p> <p>U2</p>	<p>Floor - DMX Pointe f-no</p> <p>1 31 61 91 909 910 911 912</p> <p>U17</p>	
<p>WARRP f-no</p> <p>1 2 7 8 11 11 12 13 14 15 16 17 18</p>	<p>Aud Bars - DMX Mac 700 f-no</p> <p>211 234 257 280 303 326 801 802 803 804 805 806</p> <p>U15</p>	
<p>Floor - DMX K10 f-no</p> <p>1 36 71 106 141 176 211 246 901 902 903 904 905 906 907 908</p> <p>U16</p>	<p>Floor - DMX Hazer</p> <p>501 501</p> <p>U16</p>	

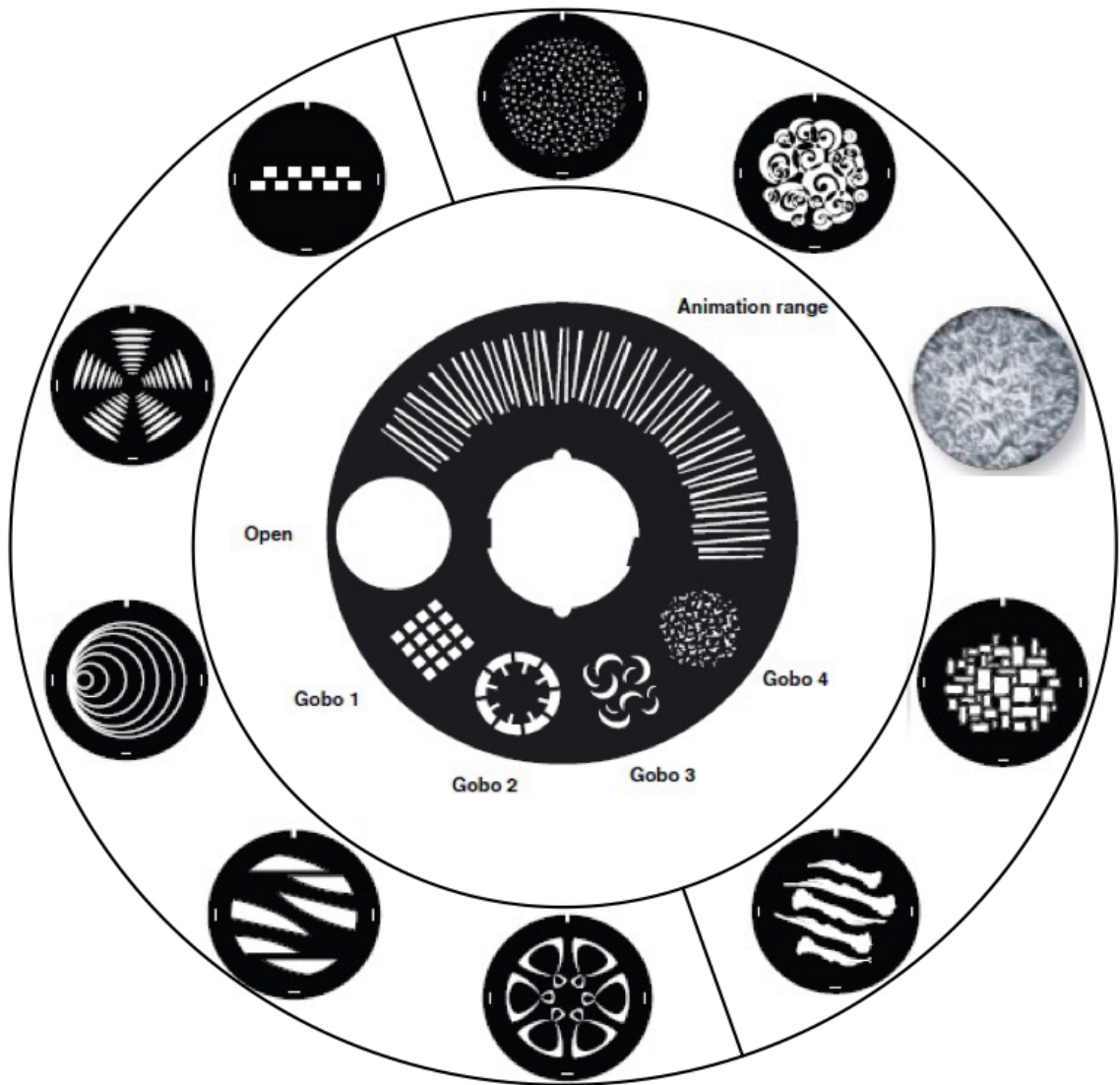
Dimmer Patch Sheet

Please be advised not to Patch the Non-Dim channels

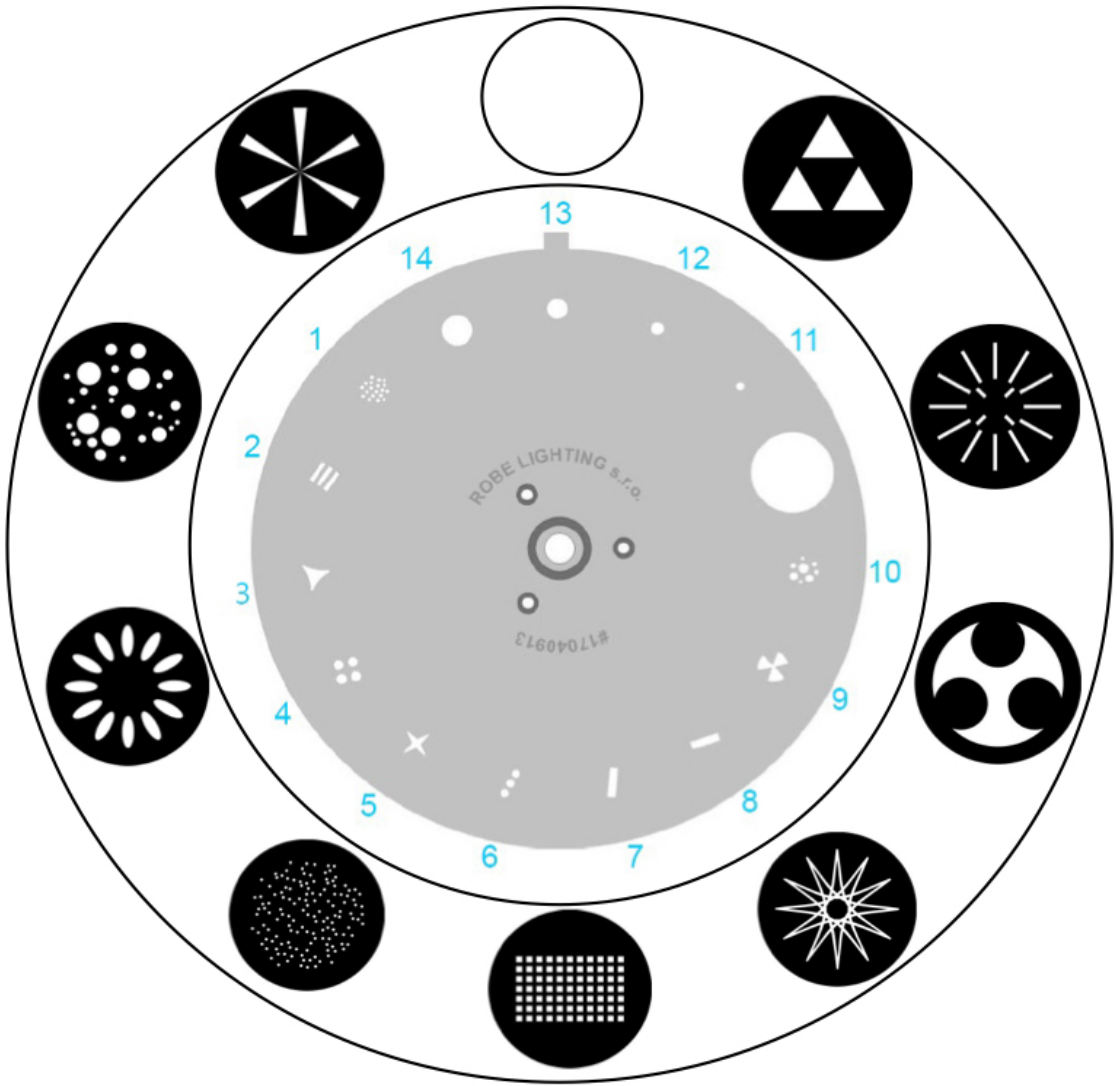
	DMX Channel	Universe		
Dimmers	1 + 2	1		
	5 -10			
	13 - 30			
	33 - 38			
	41 - 114			
	127 - 152			
	161 -164			
	173 -184			
	193 - 202			
	211 - 217			
	220 -223			
	228 - 231			
	236 + 237			
	240 - 243			
	248 + 249			
	254 + 255			
258 + 259				
262 - 308				
House Lights	309 - 316	1		
	321 - 336			
	339 - 350			
	353 - 356			
Mobiles	51 + 76			
Florries	317 - 320		1	
	337 - 338			
	351 - 352			
	357 - 364			
Non Dims	3 + 4			DO NOT PATCH
	11 + 12			
	31 + 32			
	39 + 40			
	115 - 126			
	153 - 160			
	165 - 172			
	185 - 192			
	203 - 210			
	218 + 219			
	224 - 227			
	232 -235			
	238 +239			
	244 -247			
	250 -253			
	256 + 257			
260 + 261				

Martin Mav Viper Gobos

Break Up Wheel



Aerial Gobo Wheel



barbican

Robe DL4S Gobos

