

The background image shows a modern building courtyard with a teal overlay. The building has a mix of concrete and glass facades. In the foreground, there are several white outdoor tables and chairs arranged in a courtyard. The sky is a clear, light blue. The teal overlay is a large, semi-transparent shape that covers most of the image, with a diagonal cutout on the right side. The text 'harbican' is written in a bold, lowercase, teal font at the top. The text 'Welcome to the Director's Circle' is written in a bold, white, sans-serif font in the center of the teal overlay.

harbican

**Welcome
to the
Director's
Circle**



Letter from Claire Spencer AM CEO, Barbican Centre

Welcome to the Director's Circle! The Director's Circle at the Barbican is a group of our most committed Patrons who care deeply about the future of the arts in London. The programme is designed for arts enthusiasts who comprise our most exclusive group of individual supporters.

The Barbican is a catalyst for creativity, sparking possibilities for artists, audiences, and communities. We're passionate about showcasing the most exciting, relevant, and varied art from around the world, pushing traditional artistic boundaries and helping us understand our lives in new and unexpected ways. Central to our purpose is supporting emerging talent, shaping opportunities that will accelerate the next generation of creatives.

As a not-for-profit, we aim to raise £3 million pounds every year through philanthropy and corporate fundraising. Your commitment as a member of the Director's Circle will enable us to expand access to ensure anyone can experience the joy of art and creativity in London and beyond. From our work with local schools to provide unforgettable learning experiences, to development opportunities for emerging creatives, to subsidised tickets to our events, your support will help us make a lasting difference every day.

We're so excited that you'll be joining us in this mission, and I look forward to meeting you soon at one of our many Patrons events.

Claire Spencer

Claire Spencer
CEO

Spark creative possibilities and transformation

Make a lasting difference every day by helping us to:

- + **Nurture the next generation of creatives:** With your support, we provide free programmes for more young people to develop their artistic practice and access jobs in the creative industry. It also enables us to offer over 50,000 subsidised tickets for young people every year. Play an important role in shaping our young creative's journeys from studio space to the main stage.
- + **Bring communities together to forge better futures:** Your support allows us to build meaningful partnerships with local community groups and schools. We deliver programmes that unleash the power of creativity in young people and their teachers, and throw open our doors for co-created projects with those currently underrepresented in the sector.
- + **Connect people through a vibrant multi-arts programme:** Your support provides essential resources to commission and platform the most exciting, relevant, and varied artists and companies from across the globe. With your help, we're able to inspire, entertain, and connect millions of people each year across our artistic programme.





Join Our Director's Circle

Support us today, be a catalyst for creativity, and spark creative possibilities for more people. Explore our Director's Circle offering and how your support can make a lasting difference.

Director's Circle - £10,000

(£9,000 donation / £1,000 benefits*)

- + Invitation to the Barbican's Annual Dinner
- + Lunch with our CEO or Director for Arts & Participation
- + Invitation to a lender's dinner for an exhibition opening
- + A private tour of an Art Gallery exhibition for you and your friends
- + Invitations to a suite of VIP events including opening nights and curator's talks
- + Concierge service through our dedicated Patron team
- + Personal Account Manager and special access to tickets for sold-out shows
- + Enhanced Patron Priority Booking
- + VIP Outdoor Cinema Tickets for you and a guest with refreshments and reserved seating
- + Invitations to an Open Rehearsal for you and a guest
- + Opportunity to reserve seats across an entire season
- + Invitation for you and a guest to a Press Night for a Theatre show, with complimentary tickets
- + A salon-style artist event or studio visit every year
- + An annual backstage tour of our Theatre and Hall
- + Invitation for you and a guest to champagne previews of our exhibitions
- + Invitation for you and a guest to special supporter's receptions
- + Patrons Welcome Pack and Monthly Newsletter
- + Free entry into all exhibitions for you and a guest
- + All the benefits of Barbican Membership Plus with use of the Member's Lounge and discounts on selected tickets
- + Acknowledgment of your support on our Donor Board and in print

Donations support the Barbican Centre Trust Ltd, a registered charity in England and Wales (no 294282).

* All Patron offerings are split between a benefit purchase and a donation. The donation is a suggested amount to which Gift Aid provisions apply. You may separately donate without purchasing benefits or purchase the benefits package without a donation.

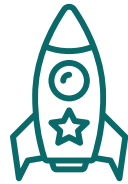
Discount, waived booking fees and priority booking exclusions apply. Discounted tickets and bespoke access experiences are subject to availability. Check our full Membership [T&Cs](#).

Your support makes tangible differences in the lives of many



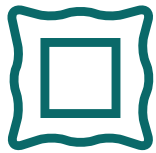
£1,500

covers the cost of interpreting five Family Film Club events in British Sign Language



£6,000

helps us plan and deliver 10 free creative playing sessions for children with additional learning needs



£3,000

covers the cost of keeping our Curve Gallery free to the public for 10 days



£8,000

commissions a young composer and stage their Barbican premiere



£4,500

covers the travel and transport costs of a European theatre company performing at the Pit Theatre



£10,000

supports a partnership with a local school for a year, helping more children to unleash the power of creativity



A photograph of three women in a social setting, possibly a bar or event. The woman in the center is wearing a teal outfit and a lanyard with a Barbican badge. She is smiling and holding a drink. The woman to her left is wearing a black top and a checkered hair tie, also smiling and holding a drink. The woman to the right is partially visible, holding a drink. The background is dark with warm lighting.

Join the Director's Circle today

Join via credit or debit card:
On our website

Join via BACS transfer:
Sort code: 30-00-02,
Account no: 02006567,
Ref: Your name

Join via Direct Debit:
Please fill out our Joining Form and return to
melia.wong@barbican.org.uk

For more information on our Director's Circle

Contact Melia Wong, Patrons Manager

Email me at melia.wong@barbican.org.uk

Call me at +44 20 3834 1200

Go online: barbican.org.uk/barbican-patrons

Other ways to support

Email us

development@barbican.org.uk

Leave a legacy

barbican.org.uk/leave-a-legacy

Businesses

barbican.org.uk/for-businesses

Trusts & Grants

barbican.org.uk/trusts-grantmakers



The City of London Corporation is the founder and principal funder of the Barbican Centre



Cover image: Lakeside Terrace, Barbican Centre, © Max Colson.

Inside Pages 2, 4/5 & 9: Hannah Burton
Pages 6 & 10/11: Vestiaire Collective x the Barbican, © Rowben Lantton